



DREAM LIGHT Workshop

User Manual

DLW 1700R FOLLOW

Guangzhou Dream Lighting Equipment Co., LTD

Contents

Safety Information	2/3
Package&Transportation	4
Fixture Package	4
Transport protection lock	4
Unpacking	4
Accessories with fixture	4
Product Technical Specifications	5
Elrctrical parameters	5
Light source parameters	5
Optics parameters	5
Effect configuration	5
Size&Weight	5
Power connection	5
Connection type	6
Installation rule	6
Installation Instruction&Requirement	6
Fixture Installation	7
Lamp installation	7
lamp changed	7
Maintenance&cleaning of the fixture	8
Troubleshooting	9
Attachment1:Angle range and the measurement figure of the	9
Attachment2:Electrical Diagram	10

Safety Information





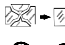
Note: Please check the complete package after received , and please unpack and check if the fixture is damaged during shipping. If the fixture is damaged during shipping, please do not use it and contact the manufacturer/local technicians as soon as possible.

The following identifications are used to identify the product and identify the important safety information in the user manual.

Caution!	Indoor used only!	Refer to the manual before installation/ power on/ maintenance	Caution Eelectric shock hazard!	Properly grounded	Caution wear goggles!	Caution! High surface temperature Don't touch!	Caution! Must wear gloves!
Caution Prevent fire!	Do not stare at the operating light source	Do not interfere with the track of the operating fixture	Minimum distance of illuminated objects(m)	Rated maximum ambient temperature!	Don't install the fixture on the surfact of combustible materials!	Replace any cracked protective shields	

Notes:

- The fixture is used professionally only, please don't used it for any other purposes.
- Please refer to the latest user manual before using the fixture. The fixture is out of warranty if problems are caused by any incorrect use or negligence of the user manual.
- The fixture is used indoor only; the protection level rate is IP20. Please keep the fixture dry and avoid to use the fixture under the environment of damp, overheating or dusty. Please keep the fixture away from water or any other liquids.
- The fixture should be installed in a well-ventilated place. Keep the distance of the fixture and the obstacles more than 1 meter, and please check the fans and ventilation hole sare not blocked.

- Please don't install the fixture on the surfaces of the inflammable goods directly. ()
- Please check the voltage before the professional technicians install the fixture.
The voltage must be the same with the voltage which marked on the fixture.
Overloading protection or leakage protection are also required.
- Before power on the fixture, please check whether the fuse meets the technical requirements.
Please don't replace the fuse without professional instructions and short circuit it when the fixture is powered on. And then confirm whether the input
- voltage meets the technical requirements and the ground wire is properly connected.
- Please cut off the power supply when replacing the fuse. ()
- Rated maximum ambient temperature when the fixture is working: $t_a = 40^{\circ}\text{C}$.
- The safe/shortest distance to the illuminate object: 20m.
- when the fixture working stably, the maximum surface temperature: $t_c = 135^{\circ}\text{C}$.
- The shortest safety distance to combustible material: 1m.
- Please don't touch the fixture when it is working stably. It's highest surface temperature can reach 135°C .
- The distance should be longer than 3.5 m when the installation location of the fixture is designed to be stared for a long time.
- When using the fixture, please pay attention to severe damage caused by the shock from fire, heat, or the UV violation.
- Please don't stare at the working fixture directly without any eye protection.
- Please don't power off the lamp or cut off the power supply when it is working in 5mins, because of the special necessary of Metal halide discharge bubbles. Please reset it or move it or open it after power off for 15mins or cooling completely.
- Please replace the protective cover and lens if any visible damage happened or the damage has reached the malfunction level. ()
- The fixture must be installed, operated, and maintained by professionals strictly according to the user manual.
- All the information of the user manual is for your reference only. All fixtures should be subject to the actual product, which is subject to change without prior notice.

Package & Transportation

Fixture package

- Please cut off the power supply and cool it down for over 15minutes before packing the fixture.
- Put the fixture into plastic bag, then grasp the handles and arms to keep it handstand, and then put it into the flight case vertically and carefully, the parts are place at special area in flight case, then close the flight case and lock it. don't put it upside down.

Transport protection lock

- Protective locks for pan and tilt movement are installed in the fixture for safe transportation.

Unpacking

- Open the packing box, and then open the inner packing bag.
- Open the triangle support, and then install the fixture on the triangle support.
- Grasp the handle of the fixture, take it out of the case carefully.

Notice: Please check the complete packge after received the fixture, please check whether the fixture is damaged or not during shipping after opened the packing. If the fixture is damaged during shipping, please don't use it first, and contact the manufacture/local technicians as soon as possible.

Accessories with fixture

Accessories	Qty
User Manual	1
Warranty Card	1
Triangle Support	1

Product Technical Specifications

Electrical parameters

AC 200 - 240V 50 / 60 Hz

Input Power:1950W rated electrical current:9.8A,PF≥0.98

Light Source parameters

- light source:OSRAM lok-it 1700/PS.
- Life span:750Hrs.

Optics parameters

- Reflector: reflector from Europe, Master-sub reflector design.
- Lens:3 groups high quality optical components,Antireflection Coatings.
- Electric zoom range: 6~12°

Effect configuration

- color temperature linear adjustment.
- 0~100% smooth dimmer.
- 0~100% iris.
- Removable pluggable gobo/ aperture changed.

Size & Weight

- Fixture size: 995X421X476mm (without Triangle Support)
- Flight case size: 1220X 700 X 690mm
- Fixture N/W: 47kg (without Triangle Support)
- Flight case N/W:53Kg
- Fixture N/W: 43.5kg (with Triangle Support)
- IP Grade: IP20

Power connection

Input voltage and frequency must be identical to the voltage and frequency marked on the fixture. When many fixtures are working at the same time, it is strongly recommended to control each fixture on/off individually.

Connection type

L(Live line)Brown wire

N(Null line)Blue wire

E(Earth line)Yellow and green wire

Notice:

- When connect power supply, please make sure the E line (yellow & green.) is properly connected. And it is corresponded with the relative electrical installation standards.
- Insulation class between LV power supply and controlling conductor: I
- Please confirm the voltage of the power supply is corresponded to the voltage on the fixture's identifications before professionals install it. Please also make sure it has overload or leakage protection.
- If the external cable is damaged, don't change it by yourself, please contact the manufacture/local as soon as possible.

Installation rule

- When changing the lamp, don't touch the lamp with hands directly, to avoid oil to stain the surface of lamp, the lamp must keep clean with cleaning paper.
- To avoid hidden danger or fixture damaged, please don't change the other similar lamp. If do that, the company won't be responsible for the rick caused by the other brand lamps which are not available. Suggest using the original lamp recommended by the manufacture.
- Please change the lamp before it reached the life span to reduce the risk of fixture damaged.
- Any damaged or scratched lamp is not allowed to use.
- When the lamp placing into the porcelain lampholder, please check if it is well placed and aiming at the hole.
- When installing or changing the lamp, please turn it along the lampholder lightly, when the lamp is in place well, don't let it touch the reflector and the surrounding to avoid damaging the lamp.

Installation instruction& requirement

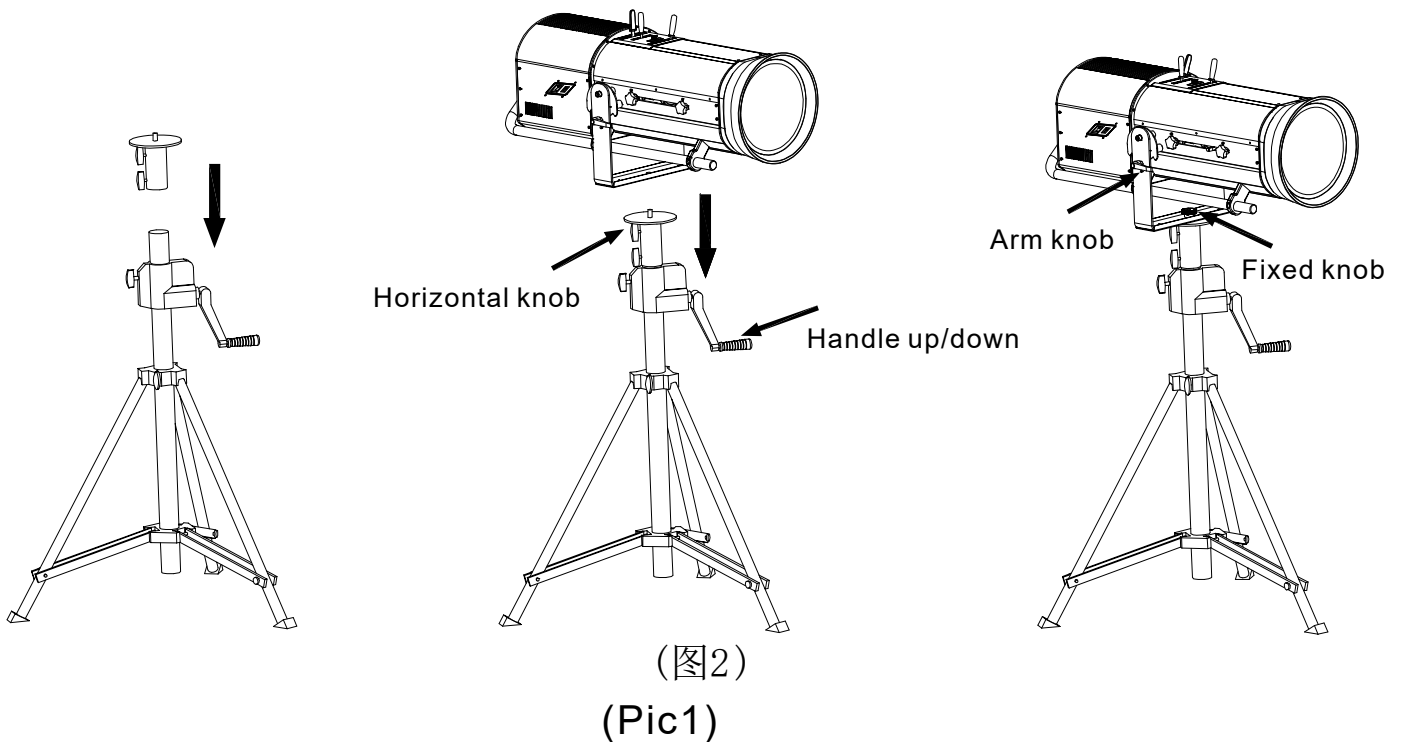
The user need to make regularly inspect the safety fixtures and installing parts, if there is lack of operating conditions and professional standards, please operate it by professional person, to avoid to incorrect installation by non-professional person leading to property loss or life danger.

Fixture installation

Fixture is installed on triangle support, lock it tightly by fixed knob, Move up or down the triangle support by handle.

Note:

- Check the arm damaged or not before installing.
- Lock tightly horizontal knob and arm knob, and then installed the fixture on triangle support, lock the fixed knob tightly.
- Check any combustibile around in 1m or not.
- Installation Diagram as bellow(Pic1):

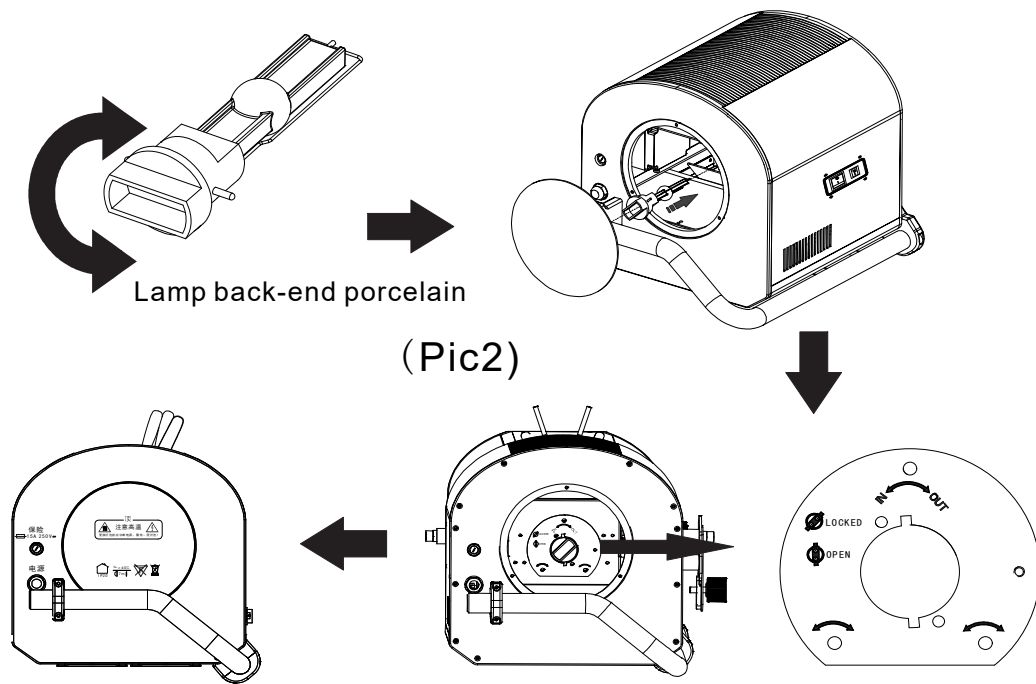


Lamp installation

Light source: OSRAM Iok-it 1700 /PS.


Lamp changed

- When the lamp is working, please turn off it and cooling it for 15mins completely, then cut off the power supply, Lock tight the vertical knob on the arm. (Pic2)
- When changing the lamp, please let the pin of lamp aim at porcelain lampholder, and then rotate the lamp tightly at clockwise 45°.
- When removing the lamp, please open the face shell of the fixture, pinch the porcelain lamp-end for anti-clockwise rotation at 45° to remove the lamp.



Maintenance & cleaning of the fixture

The fixture needs to be maintained and cleaned daily, because its lifespan depends on working environment and daily maintenance. Please contact our company engineer for any questions and feedback which are out of this user manual to our professional engineer.

Notes as bellow: 

- The power supply must be cut off before open the shell.
- Please open the shell after the fixture cooled completely.
- Cleaning the optics components gently to avoid scratching the surface coating,
To avoid damaging plastic and scratching the surface coating,
Please don't use any harmful liquid or hard objects.
- Wiping the particulate Matter with tasteless tissue-paper or cotton cloth with clean,
distilled water. Don't wipe the surface, but blow away floating things with pressure gas,
any residues must be cleaned with distilled water from center to edge, and then dry it
with soft cotton cloth.
- Please change the lens in time when it cracks or has other damages
- It is out of warranty any damage caused by fan with overmuch dust, smoke fluidity and
abnormal using fixture.
- There is temperature protection device of the fixture, when the temperature is too high
the LED module will be off automatically. When this happens, please check if the fan is
working well or not. Plus, checking if the fan filter is blocked by dust. Please only reset the
fixture after the qualified professional technicians finish troubleshooting.
- Weekly cleaning and maintenance for the fan filters and lens is recommended. Please
do a complete maintenance half a year.

Troubleshooting

The following are some problems in process of operation, and there are some suggestions for troubleshooting:

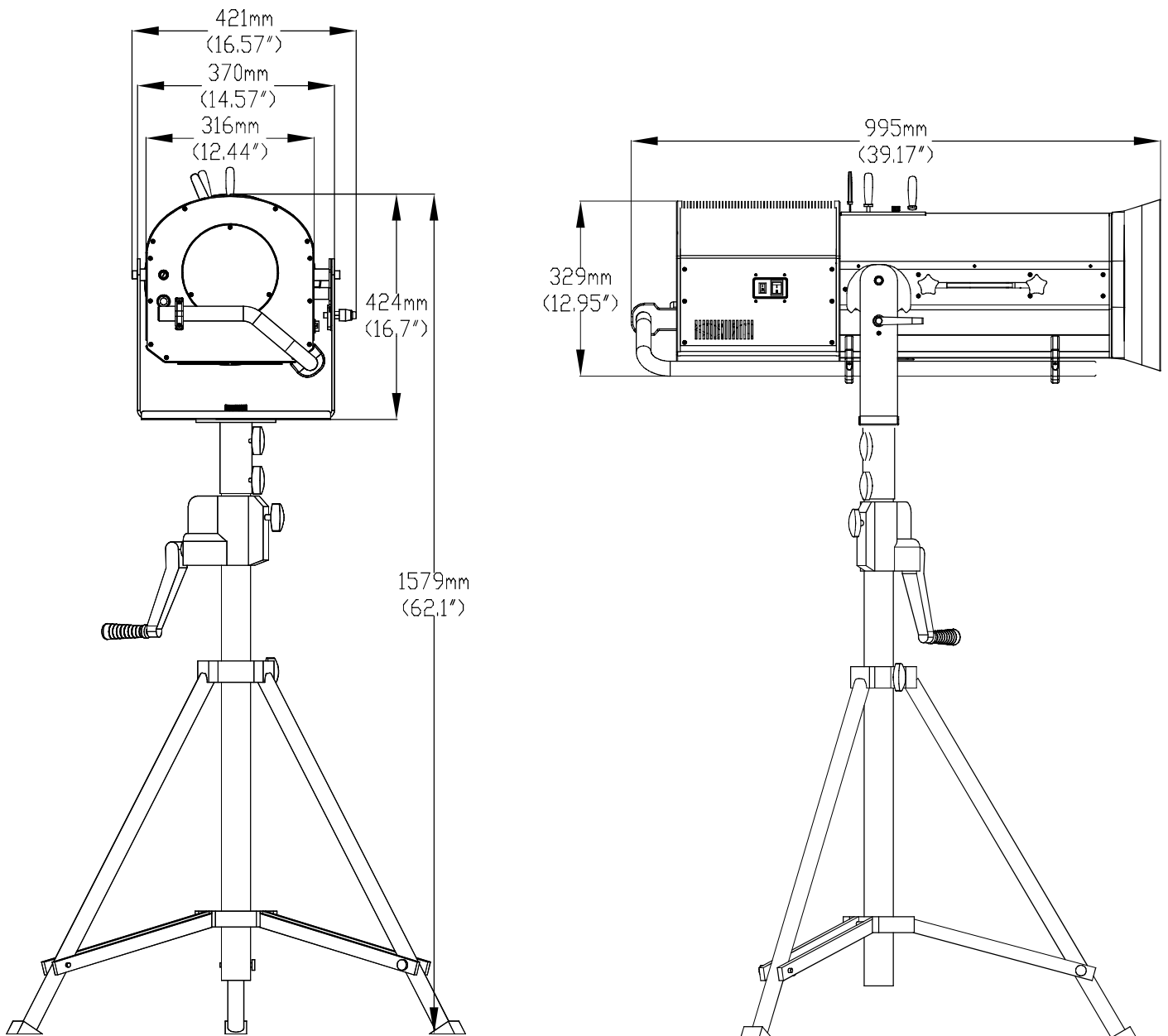
Fixture doesn't response, when power on

- Check if power input is normal.
- Check if power switch is on.
- Check if fuse is burned.

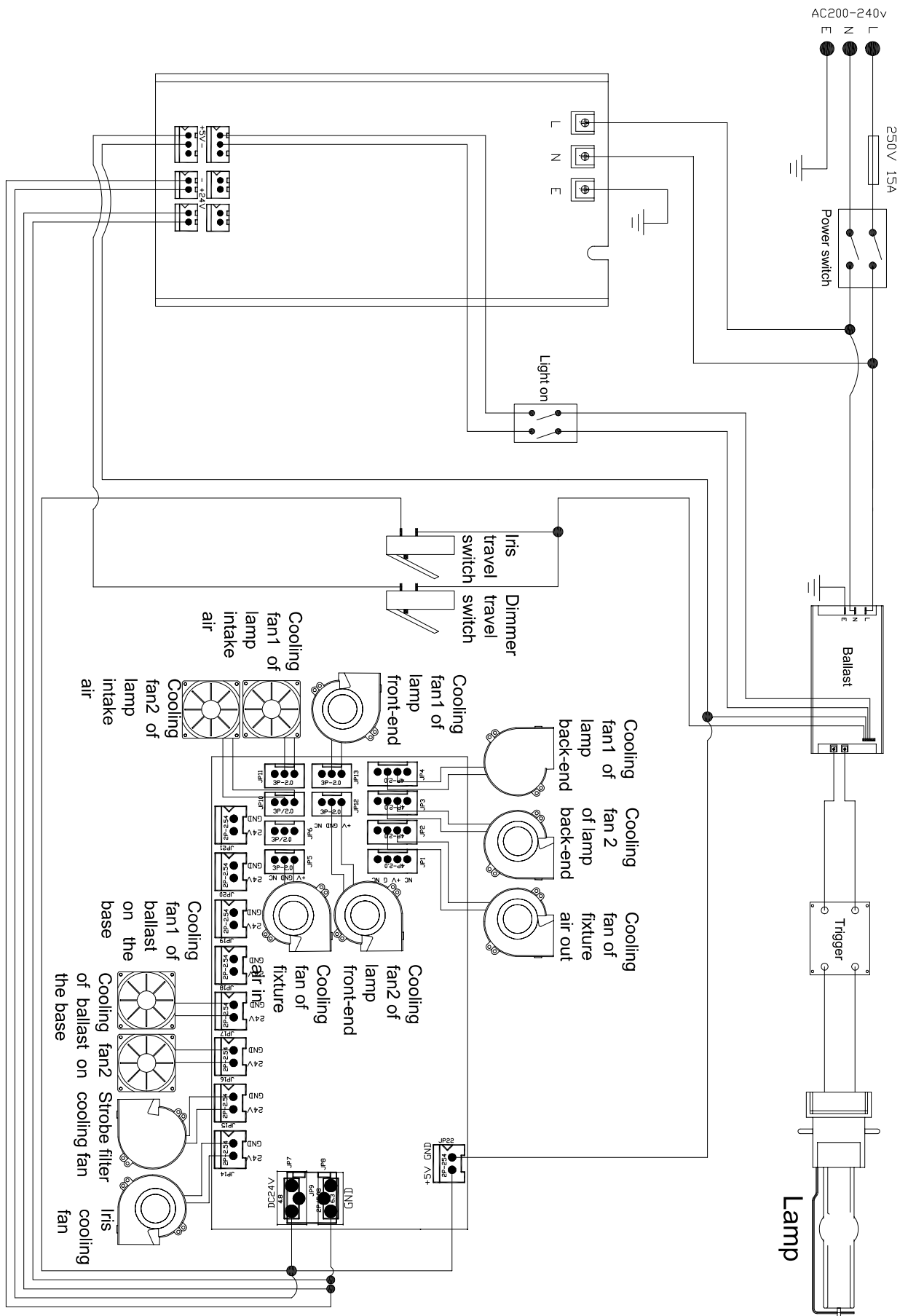
Lamp blinking:

- Check if the voltage is too high or too low, when the lamp is abnormal lighting.
- It is necessary to change the fan if the inner temperature is too high.

Outline and Installation Size



Attachment 2:Electrical Diagram





DREAMLIGHT



Guangzhou Dream Lighting Equipment Co., LTD

Add.No.21,Ruixiang Road, Xinhua Industrial Zone,
Huadu District, Guangzhou

Tel.020 8161 2345 Fax. 020 3686 6631

www.dlw-lighting.com